



How to use EasyBlue Box with Skype




➔ Download Skype for Windows minimum ver. 1.0.0.106

- [Download Skype software](#) and install it
- Run Skype and log in with skype account.
Icon is  means Skype connect successfully;
Icon is  please check PC connect to Internet successfully..

➔ Connect EasyBlue to PC

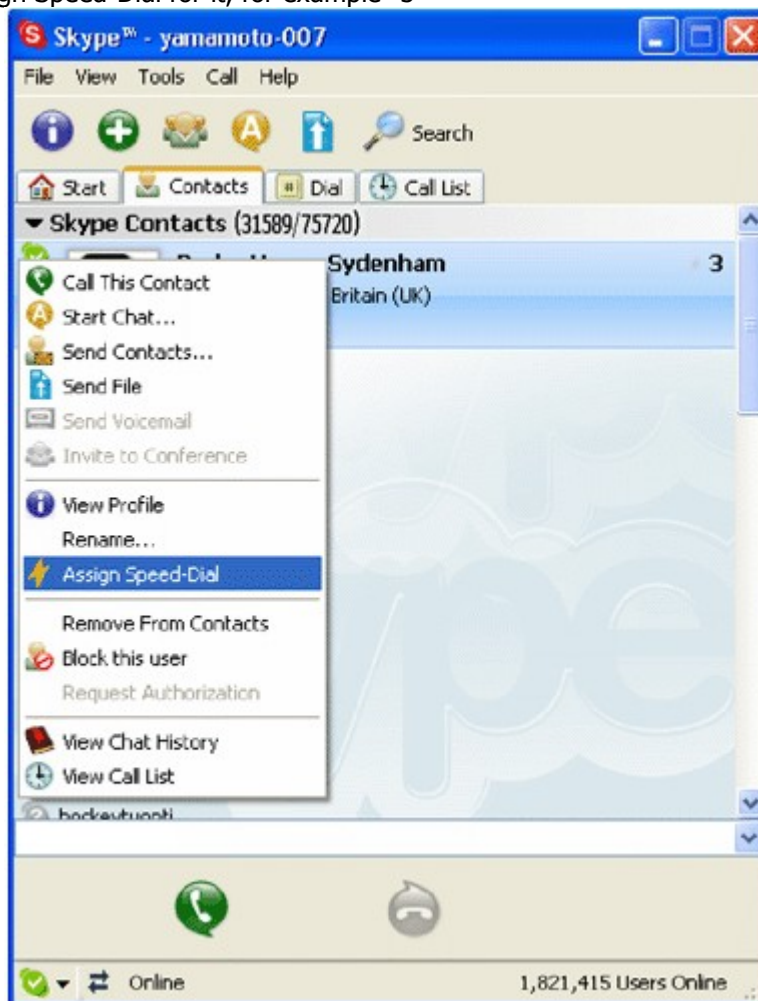
- Plug EasyBlue Box to your PC usb port , the "Power" will be on.
- Plug PSTN line to "LINE" port, the "LINE" will be on.
- Plug Phone to "TEL1"(or "TEL2") port.

➔ Run CallMe

- Download [CallMe](#) software and install it
- Run [CallMe](#)
After running [CallMe](#), there is a icon:
 -  Device and Skype are connected successfully;
 -  Please run Skype first;
 -  The [EasyBlue box](#) connected incorrectly, please reconnect.

➔ Make calls

- Add to your contact list f.ex "[yamamotogrouplondon](#)"
- Assign Speed-Dial for it, for example "3"




- Input number and call out:

Press "*" for changing to USB channel,the"USB" indicator is on. Dial "11" on phone,this number will be shown in the Skype window.And then press "#", Skype will call out .If the number is invalid, Skype will popup a box. Press any key ,the box will be cleared . Then check number and input again.

For SkypeOut

- Press "*"+"00"+"country number"+"phone number"+"#" can start the Skypeout.

Adjust options (volume and ringer)

- Double click the  on the taskbar, then you can adjust the volume and ringer